

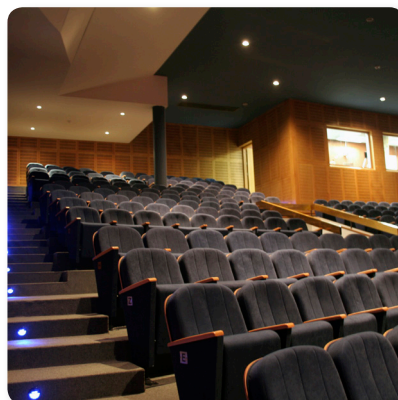
Install

QFLEX 40

Digitally Steerable Powered Column Array Loudspeaker with 40 Independently Controlled Drivers, Integrated DSP and BeamEngine GUI Control for Installation Applications

- Digitally steerable column array speaker system provides extremely high intelligible speech and music reinforcement
- Class leading $\pm 70^\circ$ steering control with 40 channels of integrated DSP and amplification
- Intuitive BeamEngine GUI for asymmetric pattern creation and even near and far field SPL coverage
- Ideal for the most challenging acoustic environments due to extended frequency range steering control
- 8 4" low frequency drivers, 16 3" low frequency drivers and 16 1" high frequency drivers with individual 100 Watt Class D amplifiers and integrated cutting edge DSP
- For installation applications with coverage distances up to 70 m (230')
- High density array of transducers with proportional frequency spacing prevents aliasing artefacts
- Fully integrated amplified speaker system connects to other TANNOY VNET enabled products
- Accessory options for constant voltage systems and Audinate Dante* digital audio networks, Ethernet control, and AES3 break in interface
- AES3 input and link connections on RJ-45 connectors with internal sample rate conversion up to 96 kHz
- Fully PA/VA compliant
- Architecturally styled aluminium enclosure with a semi matt white painted finish

The QFLEX 40 is a powered, digitally steerable multi-channel, column array loudspeaker designed as a complete solution for installed applications with challenging acoustics, such as houses of worship, transportation hubs, convention centres, conference facilities, shopping malls, performing arts centres and museums. The heart of the system is our proprietary VNET loudspeaker networking platform, which comprises both software and hardware DSP components that produce extremely-high speech intelligibility, impactful music reinforcement, and complete loudspeaker system diagnostics and monitoring.



Class-Leading Control

While many competing steerable arrays allow only a modest steering range across specific frequencies, the QFLEX 40 has a class-leading $\pm 70^\circ$ steering control, plus 40 channels of integrated DSP and amplification for consistent and highly intelligible full-range voice and music applications.

TANNOY

Install

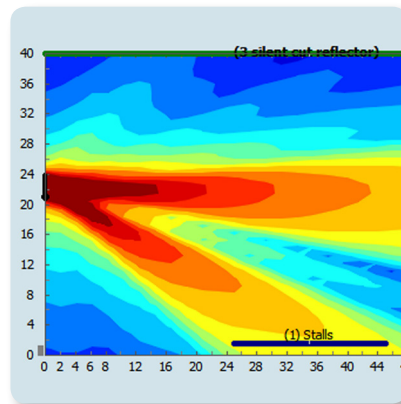
QFLEX 40

Digitally Steerable Powered Column Array
Loudspeaker with 40 Independently Controlled
Drivers, Integrated DSP and BeamEngine GUI
Control for Installation Applications

- Corrosion resistant aluminium perforated grille
- Included custom brackets allow quick and accurate installation
- 10-Year Warranty Program*
- Designed and engineered in the U.K.

A Revolution in Sound Technology

The first digitally steerable column array loudspeaker of its kind, QFLEX 40's revolutionary BeamEngine technology steers the the full-range sound away from surfaces that cause reflections. The intuitive BeamEngine GUI allows the designer to specify target areas. Rather than only providing a limited palette of opening and steering angles, the BeamEngine GUI generates a steering algorithm that is tailored for that specific area. The resulting asymmetrical pattern delivers similar sound pressure levels (SPL) in both the near and far field for superb coverage and intelligibility – all in a very aesthetically-pleasing package.



Drivers, Power & DSP

The QFLEX 40 column array loudspeaker comprises eight 4" low frequency drivers, sixteen 3" low frequency drivers and sixteen x 1" high frequency drivers, each with their own individual 100 Watt Class D amplifier and integrated cutting edge DSP. Presented in a high density array with proportional frequency spacing, QFLEX 40's drivers provide digitally-steerable coverage for distances up to 70 m (230') – with no aliasing artefacts. A robust internal DSP engine works seamlessly with the proprietary VNET and BeamEngine software, both of which are available for free download [here](#).

*All third-party trademarks are the property of their respective owners. Their use neither constitutes a claim of the trademark nor affiliation of the trademark owners with MUSIC Tribe. Product names are mentioned solely as a reference for compatibility, effects and/or components. Warranty details can be found at musictribe.be.

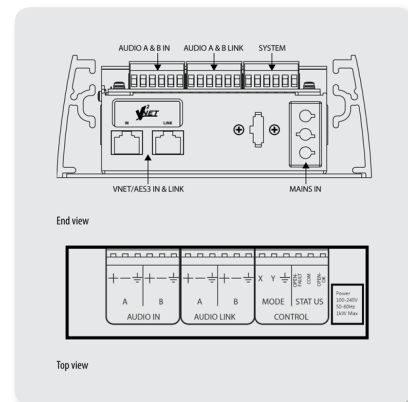
Install

QFLEX 40

Digitally Steerable Powered Column Array
Loudspeaker with 40 Independently Controlled
Drivers, Integrated DSP and BeamEngine GUI
Control for Installation Applications

Scalability

Designed to provide premium-grade performance as a standalone self-powered column array, QFLEX 40 is also an exceptional choice for multiple-column configurations consisting of other **TANNOY** VNET enabled products. Implementation of the network between nodes is via high-quality rugged Neutrik Ethercon connectors, which are compatible with standard RJ45 plugs, and CAT5 cable. Each speaker has a unique address for auto-location on the network.



System Add-Ons

A wide range of accessory options are available for the VNET-enabled QFLEX 40 including: The VNET ETHERNET INTERFACE; VNET USB RS232 INTERFACE; VNET2-AES INTERFACE, VNET INTERFACE POWER SUPPLY; VNET INTERFACE RACK MOUNT; SENTINEL SM1, for monitoring VNET networked PA/VA systems, as well as the QFLEX ISOLATOR, for eliminating potential ground/hum issues.

PA/VA Compliant

Engineered for the ultimate in reliability, QFLEX 40's high level of telemetry functionality renders it fully PA/VA compliant for use in any life safety or mass notification environment.



QFLEX 40

Digitally Steerable Powered Column Array
Loudspeaker with 40 Independently Controlled
Drivers, Integrated DSP and BeamEngine GUI
Control for Installation Applications



Build Quality

The architecturally styled corrosion resistant aluminium enclosure and perforated grille are finished in a semi matt white paint. The QFLEX 40 also includes the necessary custom mounting hardware for quick and accurate installation. Mains input and output link power connectors are Neutrik powerCON.

You Are Covered

We always strive to provide the best possible Customer Experience. Our products are made in our own MUSIC Tribe factory using state-of-the-art automation, enhanced production workflows and quality assurance labs with the most sophisticated test equipment available in the world. As a result, we have one of the lowest product failure rates in the industry, and we confidently back it up with a generous [Warranty program](#).

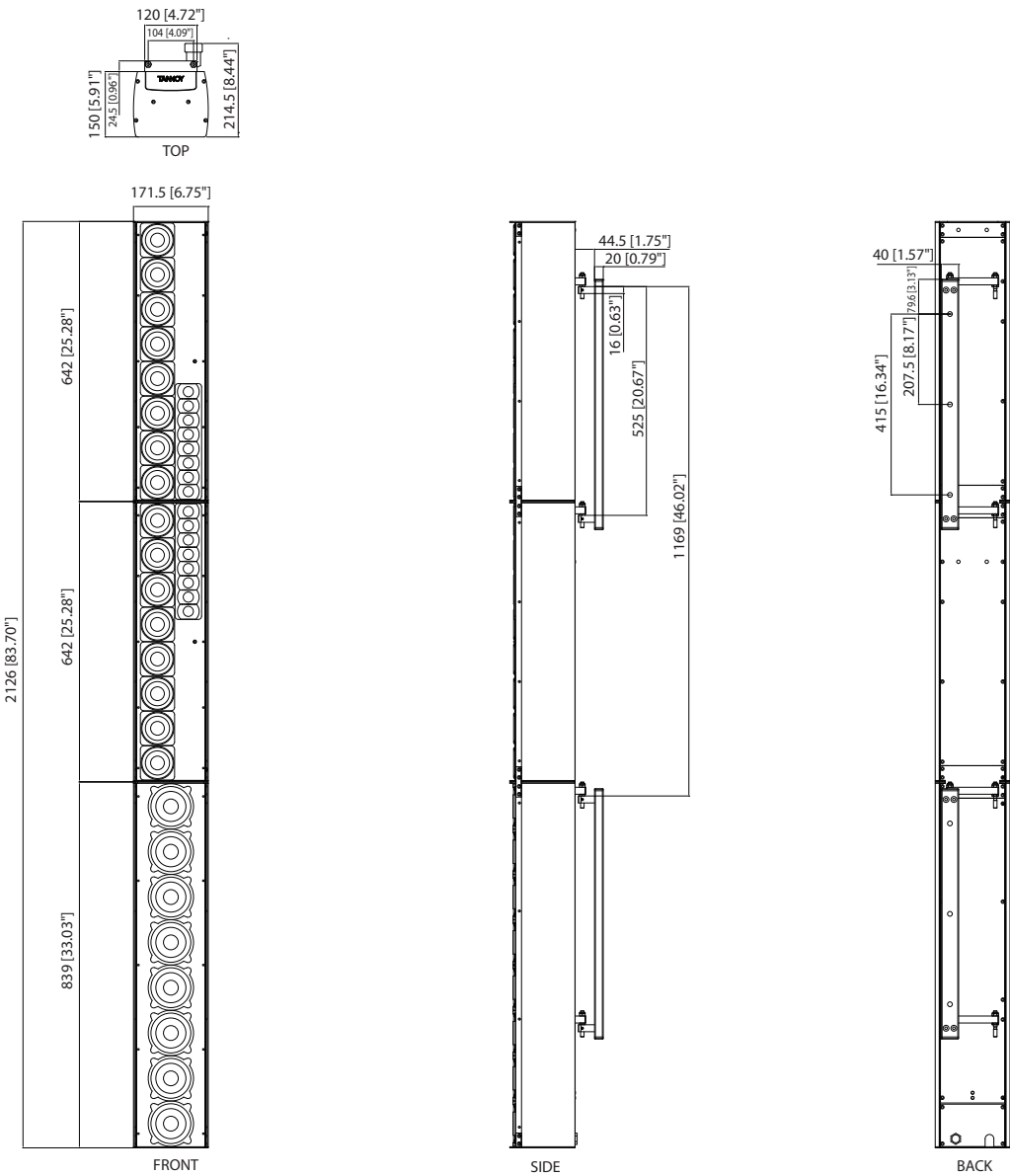


Install

QFLEX 40

Digitally Steerable Powered Column Array
Loudspeaker with 40 Independently Controlled
Drivers, Integrated DSP and BeamEngine GUI
Control for Installation Applications

Dimensions



Install

QFLEX 40

Digitally Steerable Powered Column Array
Loudspeaker with 40 Independently Controlled
Drivers, Integrated DSP and BeamEngine GUI
Control for Installation Applications

Technical Specifications

Configuration

4" LF	8
3" LF	16
1" HF	16
No. of Amp Channels 100 W (RMS) @ 4 Ohms	40
Vertical Dispersion	Variable between 10 - 100 degrees (Asymmetric & multiple beams may also be generated)
Frequency Range	110 Hz - 20 kHz
Horizontal Dispersion	120 degrees
Aiming Angle Limit	± 70 degrees
LF Beam Control Limit	250 Hz
Maximum SPL @ 100 ft (30 m)*	100 dB
Column Height	2127 mm (83.75")
Column Width	171.5 mm (6.7")
Column Depth	150 mm (5.9")
Typical Application Distance**	70 m (231 ft.)
Sample Rate	96 kHz
Audio Inputs	Analogue & AES/EBU
Net Weight	36.4 kg (80.2 lbs)
Accessories	SM1, VNET ETHERNET INTERFACE, VNET USB RS232 INTERFACE, VNET2-AES INTERFACE, VNET INTERFACE POWER SUPPLY, VNET INTERFACE RACK MOUNT, QFLEX ISOLATOR
Mains supply	100-230 V~ 50/60 Hz
Max Input power/watts	780

* Average spl (1 khz — 8 khz). Based on a mounting height of 10 m (33 ft) and a target area @ 30m (98.5 Ft) and 10 m (33 ft) wide.

Maximum attainable spl is dependant on the dimension of the target area(s). Exact figures can be derived in the beamengine™ programme.

** Based on the above venue criteria achieving 95 db spl at the quoted distance.

Install

QFLEX 40

Digitally Steerable Powered Column Array
Loudspeaker with 40 Independently Controlled
Drivers, Integrated DSP and BeamEngine GUI
Control for Installation Applications



Install

QFLEX 40

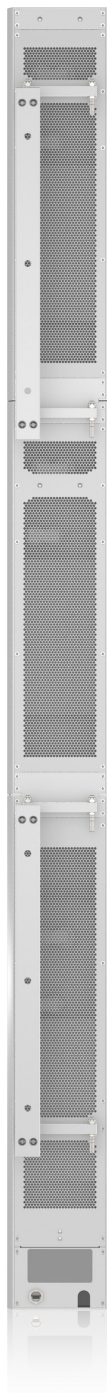
Digitally Steerable Powered Column Array
Loudspeaker with 40 Independently Controlled
Drivers, Integrated DSP and BeamEngine GUI
Control for Installation Applications



Install

QFLEX 40

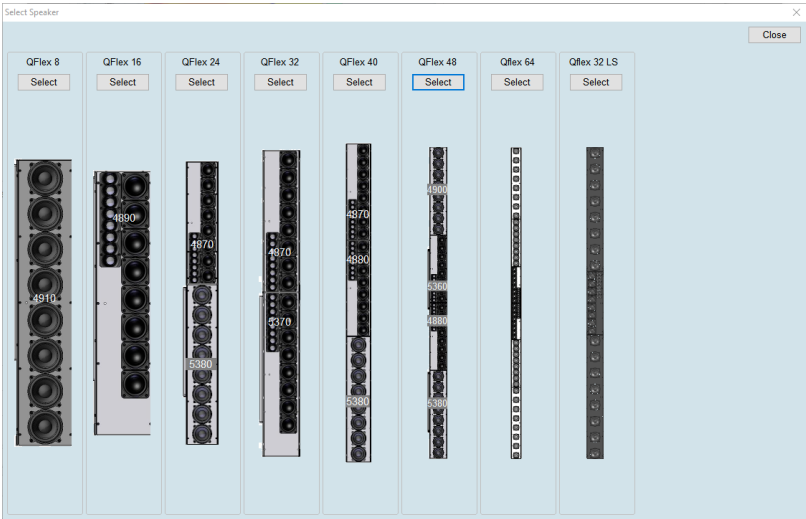
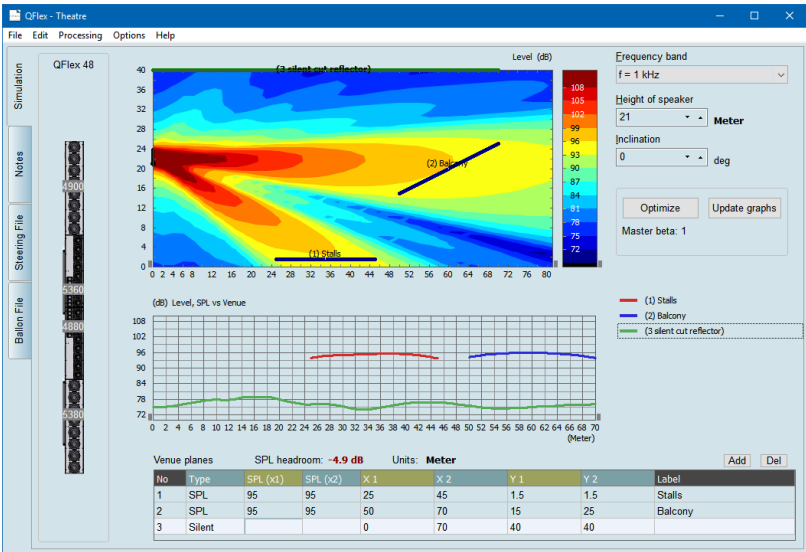
Digitally Steerable Powered Column Array
Loudspeaker with 40 Independently Controlled
Drivers, Integrated DSP and BeamEngine GUI
Control for Installation Applications



Install

QFLEX 40

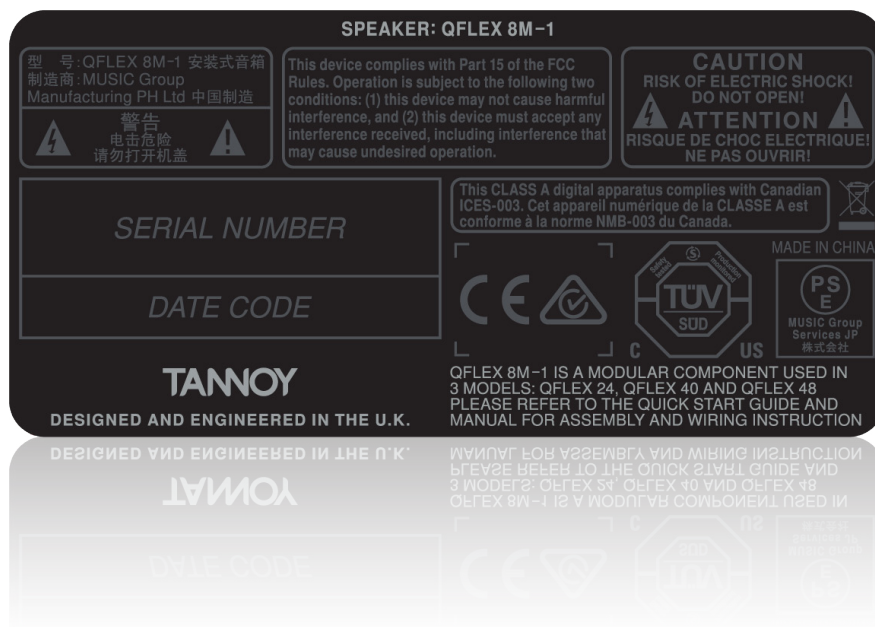
Digitally Steerable Powered Column Array
Loudspeaker with 40 Independently Controlled
Drivers, Integrated DSP and BeamEngine GUI
Control for Installation Applications



Install

QFLEX 40

Digitally Steerable Powered Column Array
Loudspeaker with 40 Independently Controlled
Drivers, Integrated DSP and BeamEngine GUI
Control for Installation Applications



For service, support or more information contact the TANNYOY location nearest you:

Europe
MUSIC Tribe Brands UK Ltd.
Tel: +44156 273 2290
Email: CARECrea@music-group.com
CAREEnte@music-group.com
CARELife@music-group.com

USA/Canada
MUSIC Tribe Commercial NV Inc.
Tel: +1 702 800 8290
Email: CARECrea@music-group.com
CAREEnte@music-group.com
CARELife@music-group.com

Japan
MUSIC Tribe Services JP K.K.
Tel: +81 3 6231 0453
Email: CARECrea@music-group.com
CAREEnte@music-group.com
CARELife@music-group.com

MUSIC Tribe accepts no liability for any loss which may be suffered by any person who relies either wholly or in part upon any description, photograph, or statement contained herein. Technical specifications, appearances and other information are subject to change without notice. All trademarks are the property of their respective owners. MIDAS, KLARK TEKNIK, LAB GRUPPEN, LAKE, TANNYOY, TURBOSOUND, TC ELECTRONIC, TC HELICON, BEHRINGER, BUGERA and COOLAUDIO are trademarks or registered trademarks of MUSIC Tribe Global Brands Ltd. © MUSIC Tribe Global Brands Ltd. 2018 All rights reserved.

TANNYOY